


Fall 2020



# Conejo Recreation & Park District



"I CAN'T CHANGE THE DIRECTION OF THE WIND, BUT I CAN ADJUST MY SAILS TO ALWAYS REACH MY DESTINATION."  
 -JIMMY DEAN



To help keep kids of all ages (!) happy, healthy, and safe, we will continue to adjust our sails to meet the needs of the community.

## RECREATION PROGRAM GUIDE

Registration for Fall 2020 Classes is offered on a rolling basis. When classes become available, notices will be posted at [www.crpd.org](http://www.crpd.org) & on CRPD's social media.

[www.crpd.org](http://www.crpd.org) [www.facebook.com/ConejoRPD](https://www.facebook.com/ConejoRPD)

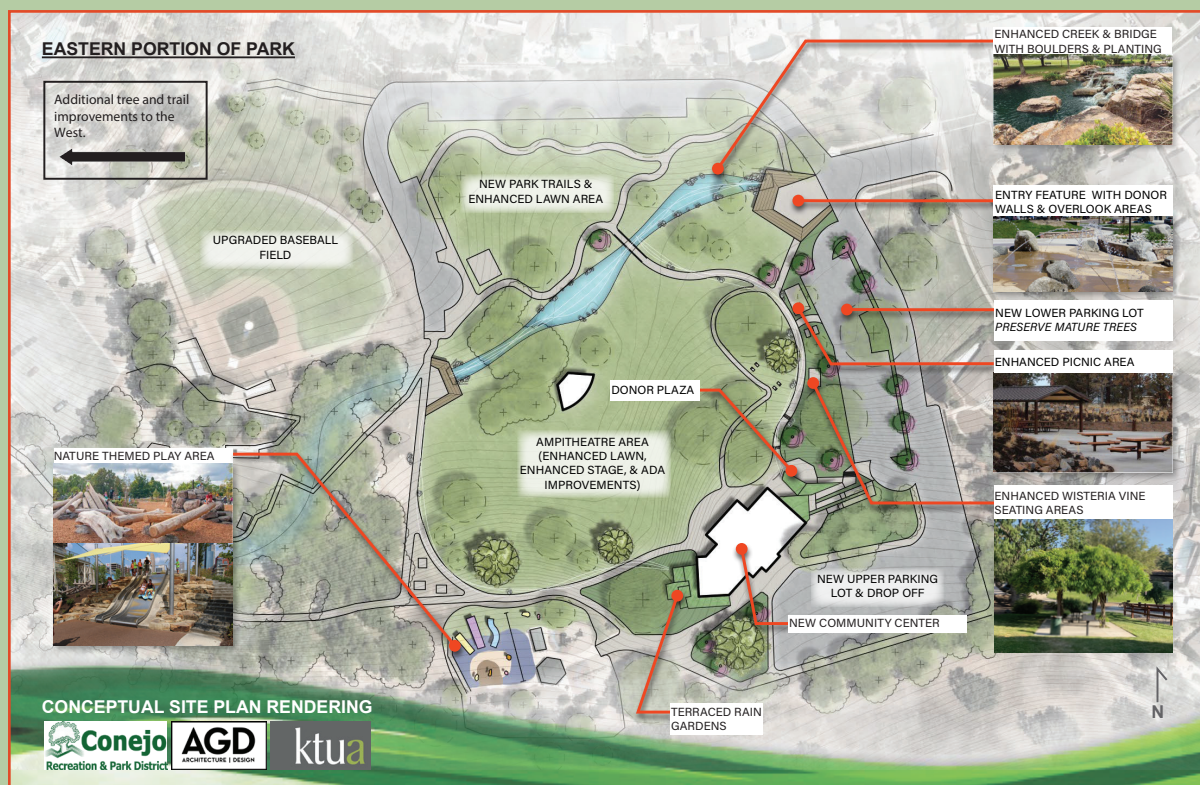


# Conejo Community Center & Park Assessment Project

The Conejo Community Center, located at 1175 Hendrix Avenue, was built by volunteers in 1965, and, as it has aged, additional maintenance costs are incurred due to deterioration and inefficiencies. In addition, the needs and desires of the community have changed significantly over the past half-century.

CRPD's vision is to enhance this unique facility for the benefit of the community while retaining the "spirit" of Conejo Community Center and Park. After several months of public input, CRPD staff developed principals that will guide the future planning efforts.

On June 18, 2020, the CRPD Board of Directors approved a contract with Andrew Goodwin Designs for environmental, landscape architectural, and architectural design services for Conejo Community Center and Park improvements.



**A Sense of Place** is the most significantly cherished component of the current property. The Center and Park complex is an extension of the residents' homes and an integral part of the neighborhood.

**The Topography and Natural Features** will be preserved and remain intact, while further highlighting the natural value provided to the site. The development will be minimized to alter existing conditions, though major built features will complement the property to balance the developed site and natural terrain.

**The Renovated Center Building** will be expanded while keeping its character and scale that complements the neighborhood. The building will be brought up to today's construction standards and will be given improvements.

**Programming** abilities will be expanded with the additional interior and exterior spaces for current and future opportunities. Enhancements will be made for year-round programs and events.

We value your input! Email Andrew Mooney at [amooney@crpd.org](mailto:amooney@crpd.org) to provide your feedback and join our mailing list. You may also visit our website at [www.crpdc.org/ccproject](http://www.crpdc.org/ccproject) for announcements, updates, and FAQs.